



TECHNICAL BULLETIN


Bulletin No: 002/19

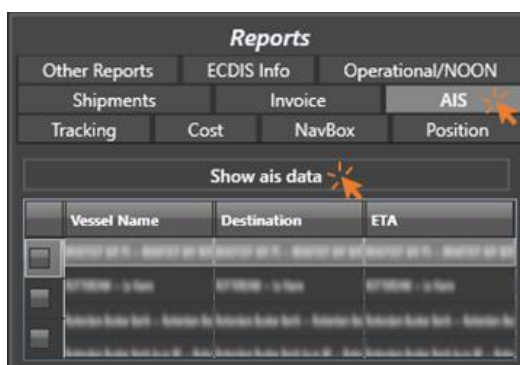
Distribution: Internal/External

Date: 24 Sept. 2019

View historical AIS data in NavTracker Desktop

To view historical AIS data - applicable for vessels having an active NavBox with AIS signal connected:

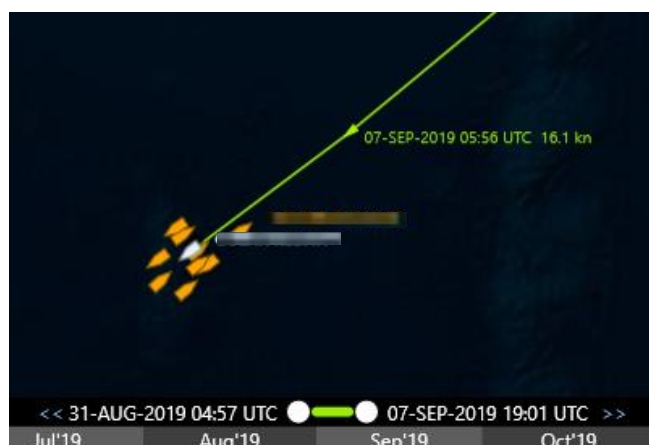
- Select a vessel from the Fleet List
- Click on AIS tab and then [**Show AIS Data**] to display AIS targets
- Set the time range by dragging the  on the time slider



NOTE! The latest reported position of selected vessel and surrounding AIS targets are always shown based on the chosen end date.



Show latest reported position at 08-DEC-2018



Show latest reported position at 07-SEP-2019

The position of each AIS targets can also be shown for a time period of 2 hours from the chosen end date/time – by selecting vessel(s) from the AIS vessel list:

Hide ais data			
	Vessel Name	Destination	ETA
<input checked="" type="checkbox"/>	0770000 - 0770000	0770000 - 0770000	0770000 - 0770000
<input type="checkbox"/>	0770000 - 0770000	0770000 - 0770000	0770000 - 0770000



Best regards,

Monica Skadberg

Product Management